

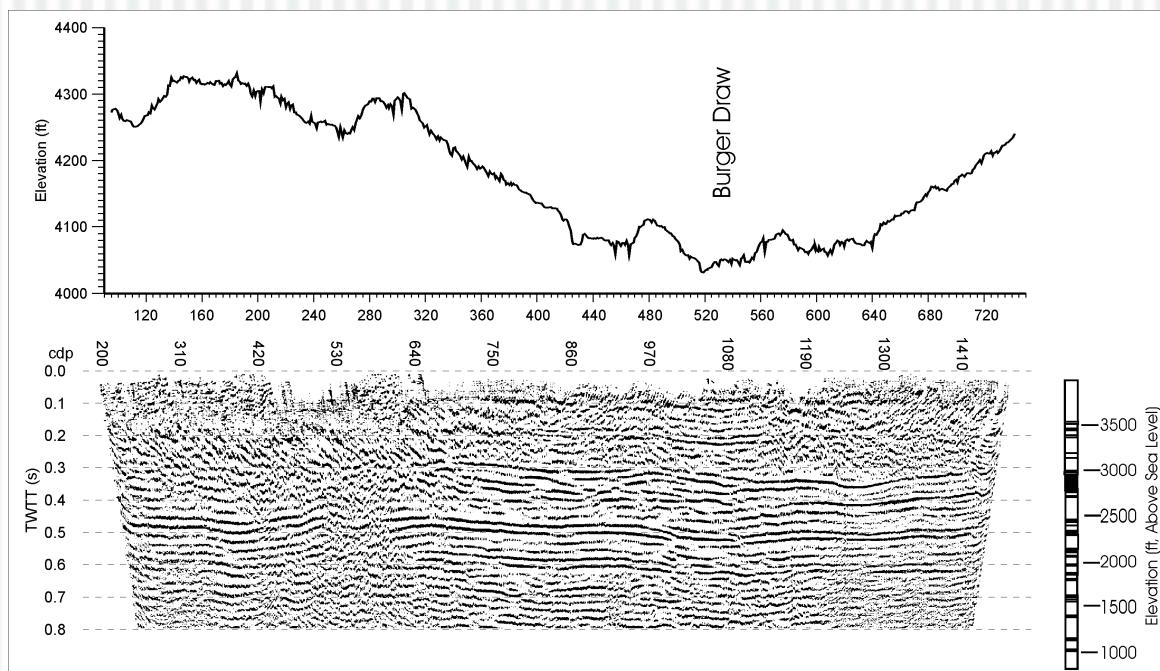
# Class Dataset

- Acquired by the University of Wyoming in 2001 at undisclosed location in Power River Basin, Wyoming
- Target - several coal seams near 1100 ft depth
- Source - a single mini-vibrator (IVI) (8 sweeps per vibration point)
- Recording system - 96-channel Bison



# Class Dataset

- Shooting started off-end but shot through the spread (switched to shooting from the opposite end) about mid-way through the line;
- Topography is rather high, so refraction/residual statics is important;
- Note a few bad records (faulty board in the recorder) and a couple of channels with switched polarity (cable problem).



# Dataset

---

- Look in: /dss/work0/morozov/GEOL882.3-2003
  - IER2001-raw.segy – SEG-Y data file in shot order;
  - Source and receiver geometry tables;